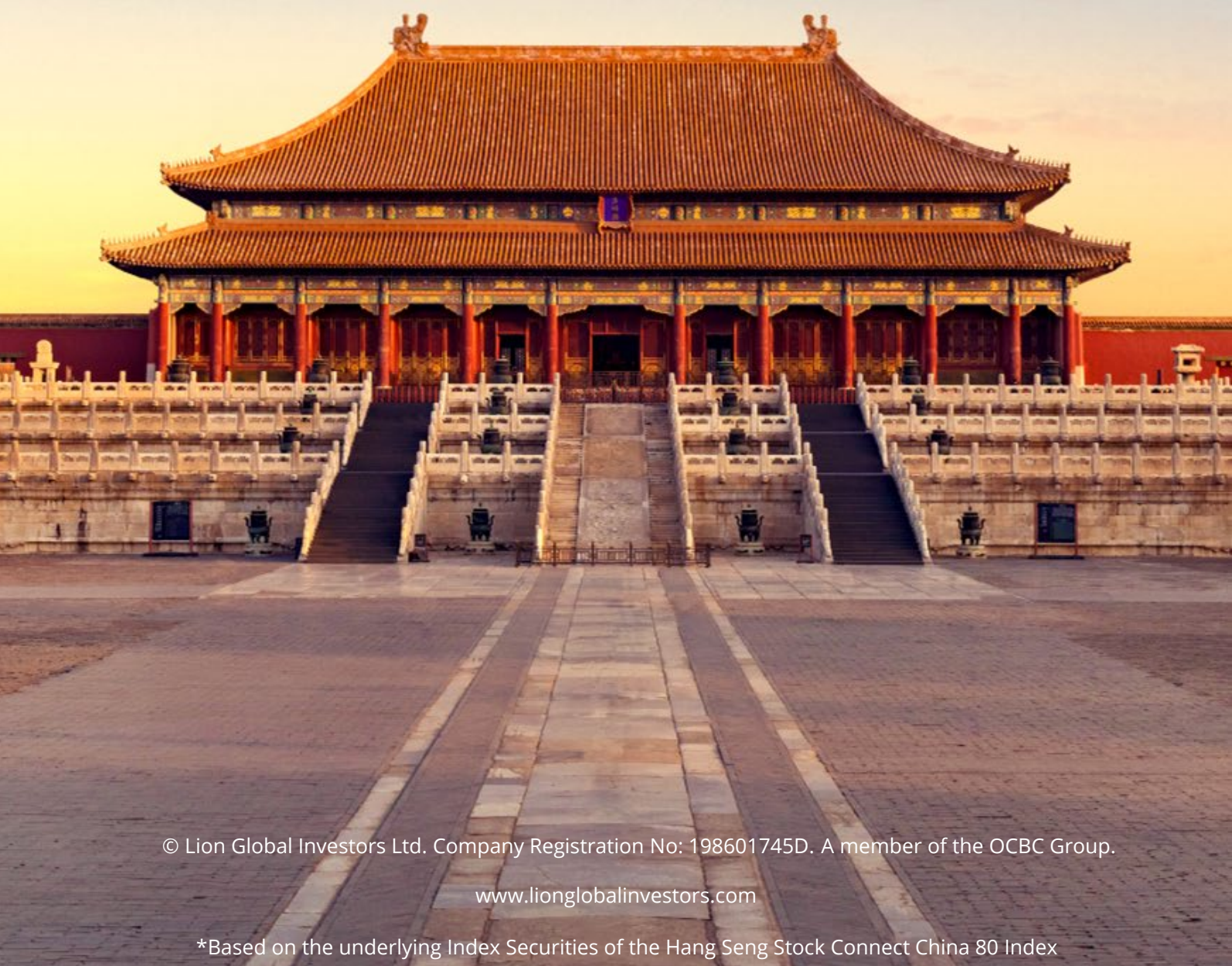


LION-OCBC SECURITIES
CHINA LEADERS ETF

Seize the opportunity with 80* China leaders.

Quarterly Newsletter

Q4 2023



© Lion Global Investors Ltd. Company Registration No: 198601745D. A member of the OCBC Group.

www.lionglobalinvestors.com

*Based on the underlying Index Securities of the Hang Seng Stock Connect China 80 Index

INTRODUCTION

- The Lion-OCBC Securities China Leaders ETF was listed on the Singapore stock market on 2 August 2021.
- This ETF is a well-diversified portfolio containing industry leaders across multiple sectors.
- It is passively managed to fully replicate the Hang Seng Stock Connect China 80 Index.

KEY FACTS

- Trading currencies: SGD and RMB
- Total AUM: SGD 74.0 million as of 31 December 2023
- Management fee: 0.45% p.a.
- SGX tickers: YYY (SGD), YYR (RMB)

KEY FEATURES



80 largest Chinese companies listed on HKEX, SZSE and SSE¹



Capped at 8% and 40% weightage for individual stocks and sectors respectively during rebalancing²



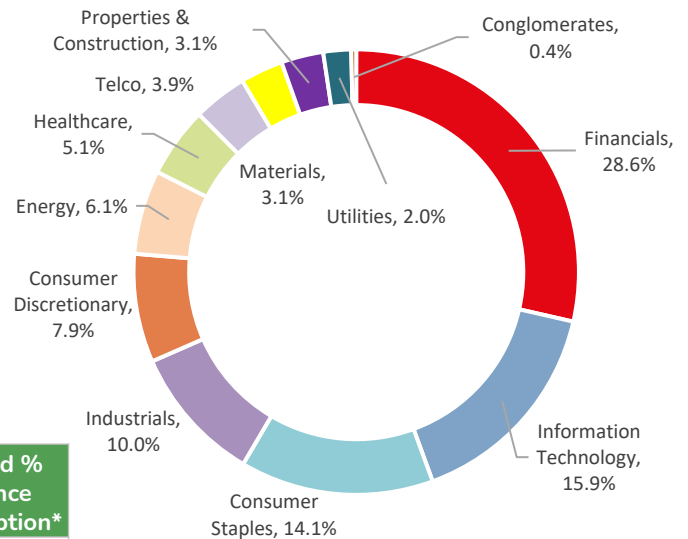
Rebalanced quarterly (every March, June, September and December)

Lion-OCBC Securities China Leaders ETF Performance³



From Bloomberg as of 31 December 2023	2023 return	Annualized % return since Fund's inception*
Lion-OCBC Securities China Leaders ETF	-12.8%	-13.6%
Benchmark Index	-13.0%	-13.5%

Composition



Source: Lion Global Investors, 31 December 2023

* Returns are based on NAV-NAV basis in SGD and assuming all dividends are reinvested net of all charges payable upon reinvestment. Performance is calculated in SGD. The Lion-OCBC Securities China Leaders ETF was listed on 2 August 2021. Opinions and estimates constitute our judgment and along with other portfolio data, are subject to change without notice. Past performance, as well as any prediction, projection, or forecast are not necessarily indicative of future or likely performance

¹ Based on the underlying Index Securities of the Hang Seng Stock Connect China 80 Index.

² Weightage of individual stocks within the index will be reviewed semi-annually and rebalanced quarterly by the index provider (Hang Seng Indexes Co Ltd). The weights of each Index Security and industry might fluctuate above 8% and 40% respectively due to market movements in between the rebalancing period

³ Source: Bloomberg, Lion Global Investors, Hang Seng Indexes Company, as of 31 December 2023

CHINA – Q4 2023 OVERVIEW

Over the past few months, we have seen China's policymakers stepping up its announcements of measures to support economic growth. These include an additional RMB 1 trillion in treasury bonds to be used for infrastructure investment, which would bring China's fiscal deficit to 3.8% of GDP, from 3% previously. The revision in budget deficit was a surprise to the market, as such revisions have seldom occurred in the past. It also signaled greater recognition by policymakers of the urgency to support the economy. There were also media reports that China plans to provide RMB 1 trillion of low-cost financing for urban village renovation and affordable housing programs.

On US-China relations, there were signs of improvement, with a meeting between foreign ministers Wang Yi and Antony Blinken, followed by a meeting between President Xi Jinping and President Biden at the APEC Summit in November 2023. We could see more fiscal measures in 2024, now that policy makers appear willing to tolerate a higher budget deficit. We are also encouraged by the improvement in economic data, particularly in industrial activity.

We expect more policy focus on industrial upgrading, and this should support recovery in orders in 2024. In our view, the stabilization of macroeconomic data, as well as signs of easing in US-China tensions are all steps in the right direction for a better performance in Chinese equities.

Figure 1: Valuation and consensus earnings forecast

Market	12-month Forward P/E ratio			Earnings growth (%)	
	Current	10-year average	Premium	2023F	2024F
US	19.8	17.8	11%	1.5	10.8
Europe	12.8	14.4	-11%	-0.8	6.0
Singapore	10.2	12.7	-20%	17.5	2.7
China	8.7	11.4	-24%	13.8	14.9
Asia Pacific ex Japan	12.7	13.2	-4%	-1.6	17.4
Japan	13.4	13.9	-4%	2.9	14.0

Source: Thomson Reuters, as of January 2024

Note: F – Consensus Forecast, ex – excluding, P/E – Price to Earnings

All data are sourced from Lion Global Investors and Bloomberg as of 31 December 2023 unless otherwise stated

We expect more policy focus on industrial upgrading, and this should support recovery in orders in 2024. By providing exposure to 80 industry leaders, the Lion-OCBC Securities China Leaders ETF is well-positioned to ride on China's long-term growth story.

HOW DOES THE BENCHMARK INDEX AND ETF COMPARE WITH OTHER CHINA-FOCUSED INDICES AND ETFs SINCE INCEPTION?

Despite the overall Chinese market volatility in Q4 2023, the Hang Seng Stock Connect China 80 Index (the Benchmark Index) had stable performance relative to other China-focused indices. Between 2 August 2021 (ETF's listing date) and 31 December 2023, the Index cumulatively outperformed⁴ other China-focused indices (Figure 2) such as the MSCI China Index and the Shanghai Shenzhen CSI 300 Index as of 31 December 2023.

Between 2 August 2021 and 31 December 2023, the Lion-OCBC Securities China Leaders ETF also cumulatively outperformed⁵ other China-focused ETFs listed in SGX (Figure 3), such as the Xtrackers MSCI China UCITS ETF and United SSE 50 China ETF as of 31 December 2023. The cumulative outperformance (as of 31 December 2023) can be attributed to the Index's exclusion of American Depositary Receipts (ADRs).

The exclusion of ADRs is thus expected to reduce the Index's exposure to foreign regulatory risks, that can adversely affect US-listed Chinese firms. By providing diversified exposure to industry leaders listed only in HKSE, SSE and SZSE⁶, the Lion-OCBC Securities China Leaders ETF is less vulnerable to foreign regulatory risks and better cushioned against the broader market volatility.

Figure 2: Benchmark Index performance relative to other China-focused indices

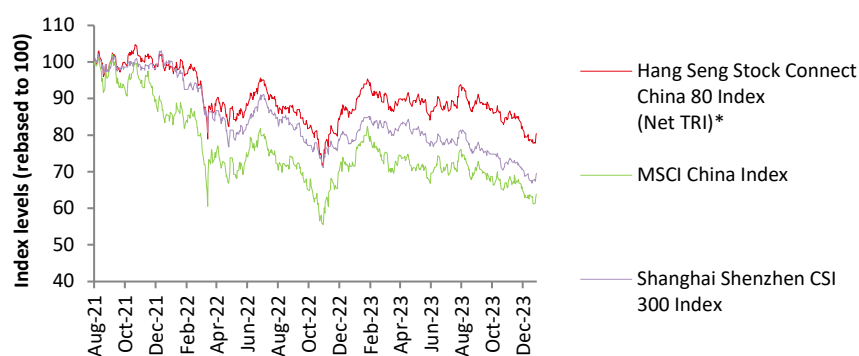
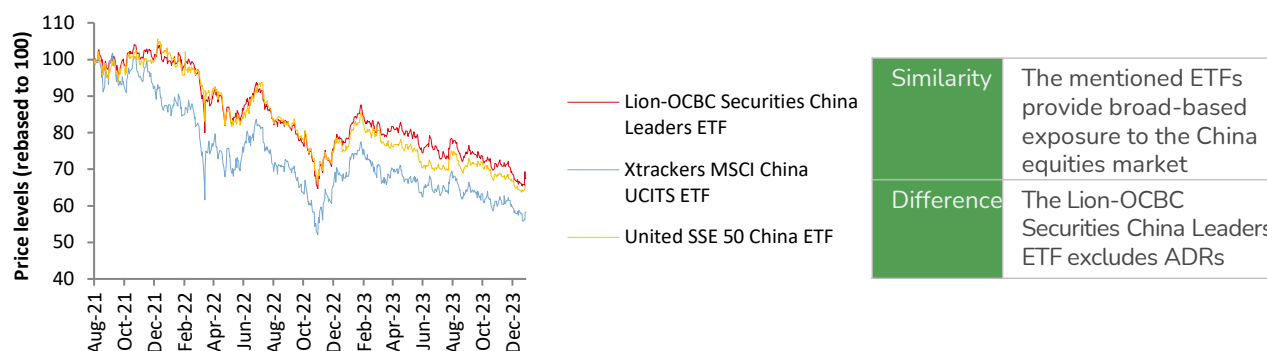


Figure 3: ETF performance* relative to other China-focused ETFs



From Bloomberg as of 31 December 2023	2023 return	Annualized % return since Fund's inception*
Lion-OCBC Securities China Leaders ETF	-12.8%	-13.6%
Xtrackers MSCI China UCITS ETF	-16.4%	-20.1%
United SSE 50 China ETF	-15.5%	-16.2%

Note: Each ETF currently adopts a direct replication strategy in tracking their respective indices. The Xtrackers MSCI China UCITS ETF tracks the MSCI China Index while the United SSE 50 China ETF tracks the SSE 50 Index.

* Returns are based on NAV-NAV basis in SGD and assuming all dividends are reinvested net of all charges payable upon reinvestment. The Lion-OCBC Securities China Leaders ETF was listed on 2 August 2021

Past performance, as well as any prediction, projection, or forecast are not necessarily indicative of future or likely performance. Opinions and estimates constitute our judgment and along with other portfolio data, are subject to change without notice.

^{4, 5} Source: Bloomberg, December 2023

⁶ HKSE, SSE and SZSE refer to Hong Kong Stock Exchange, Shanghai Stock Exchange and Shenzhen Stock Exchange respectively.

Disclaimer

Lion Global Investors

This advertisement or publication has not been reviewed by the Monetary Authority of Singapore. It is for information only, and is not a recommendation, offer or solicitation for the purchase or sale of any capital markets products or investments and does not have regard to your specific investment objectives, financial situation, tax position or needs.

You should read the prospectus and Product Highlights Sheet of the Lion-OCBC Securities China Leaders ETF (“ETF”), which is available and may be obtained from Lion Global Investors Limited (LGI) or any of its distributors and appointed Participating Dealers (“PDs”), for further details including the risk factors and consider if the ETF is suitable for you and seek such advice from a financial adviser if necessary, before deciding whether to purchase units in the ETF.

Investments in the ETF are not obligations of, deposits in, guaranteed or insured by LGI or any of its affiliates and are subject to investment risks including the possible loss of the principal amount invested. The performance of the ETF is not guaranteed and, the value of its units and the income accruing to the units, if any, may rise or fall. Past performance, payout yields and payments, as well as, any prediction, projection, or forecast are not necessary indicative of the future or likely performance, payout yields and payments of the ETF. Any extraordinary performance may be due to exceptional circumstances which may not be sustainable. Dividend distributions, which may be either out of income and/or capital, are not guaranteed and subject to LGI’s discretion. Any such dividend distributions will reduce the available capital for reinvestment and may result in an immediate decrease in the net asset value of the fund. Any references to specific securities are for illustration purposes and are not to be considered as recommendations to buy or sell the securities. It should not be assumed that investment in such specific securities will be profitable. There can be no assurance that any of the allocations or holdings presented will remain in the ETF at the time this information is presented. Any information (which includes opinions, estimates, graphs, charts, formulae or devices) are subject to change or correction at any time without notice and are not to be relied on as advice. You are advised to conduct your own independent assessment and investigation of the relevance, accuracy, adequacy and reliability of any information or contained herein and seek professional advice on them. No warranty is given and no liability is accepted for any loss arising directly or indirectly as a result of you acting on such information. The ETF may, where permitted by the prospectus, invest in financial derivative instruments for hedging purposes or for efficient portfolio management. **The ETF’s net asset value may have higher volatility as a result of its narrower investment focus on a limited geographical market, when compared to funds investing in global or wider regional markets.** LGI, its related companies, their directors and/or employees may hold units of the ETF and be engaged in purchasing or selling units of the ETF for themselves or their clients.

The units of the ETF are listed and traded on the Singapore Exchange Securities Trading Limited (“SGX-ST”), and may be traded at prices different from its net asset value, suspended from trading, or delisted. Such listing does not guarantee a liquid market for the units. You cannot purchase or redeem units in the ETF directly with the manager of the ETF, but you may, subject to specific conditions, do so on the SGX-ST or through the PDs.

© Lion Global Investors Limited (UEN/ Registration No. 198601745D). All rights reserved. LGI is a Singapore incorporated company and is not related to any corporation or trading entity that is domiciled in Europe or the United States (other than entities owned by its holding companies).

Disclaimer

Hang Seng Indexes Company Limited and Hang Seng Data Services Limited

The Hang Seng Stock Connect China 80 Index (the “**Index**”) is published and compiled by Hang Seng Indexes Company Limited pursuant to a licence from Hang Seng Data Services Limited. The mark and name “Hang Seng Stock Connect China 80 Index” are proprietary to Hang Seng Data Services Limited. Hang Seng Indexes Company Limited and Hang Seng Data Services Limited have agreed to the use of, and reference to, the Index by LION GLOBAL INVESTORS LIMITED in connection with Lion-OCBC Securities China Leaders ETF (the “**Product**”), **BUT NEITHER HANG SENG INDEXES COMPANY LIMITED NOR HANG SENG DATA SERVICES LIMITED WARRANTS OR REPRESENTS OR GUARANTEES TO ANY BROKER OR HOLDER OF THE PRODUCT OR ANY OTHER PERSON (i) THE ACCURACY OR COMPLETENESS OF THE INDEX AND ITS COMPUTATION OR ANY INFORMATION RELATED THERETO; OR (ii) THE FITNESS OR SUITABILITY FOR ANY PURPOSE OF THE INDEX OR ANY COMPONENT OR DATA COMPRISED IN IT; OR (iii) THE RESULTS WHICH MAY BE OBTAINED BY ANY PERSON FROM THE USE OF THE INDEX OR ANY COMPONENT OR DATA COMPRISED IN IT FOR ANY PURPOSE, AND NO WARRANTY OR REPRESENTATION OR GUARANTEE OF ANY KIND WHATSOEVER RELATING TO THE INDEX IS GIVEN OR MAY BE IMPLIED.** The process and basis of computation and compilation of the Index and any of the related formula or formulae, constituent stocks and factors may at any time be changed or altered by Hang Seng Indexes Company Limited without notice. **TO THE EXTENT PERMITTED BY APPLICABLE LAW, NO RESPONSIBILITY OR LIABILITY IS ACCEPTED BY HANG SENG INDEXES COMPANY LIMITED OR HANG SENG DATA SERVICES LIMITED (i) IN RESPECT OF THE USE OF AND/OR REFERENCE TO THE INDEX BY LION GLOBAL INVESTORS LIMITED IN CONNECTION WITH THE PRODUCT; OR (ii) FOR ANY INACCURACIES, OMISSIONS, MISTAKES OR ERRORS OF HANG SENG INDEXES COMPANY LIMITED IN THE COMPUTATION OF THE INDEX; OR (iii) FOR ANY INACCURACIES, OMISSIONS, MISTAKES, ERRORS OR INCOMPLETENESS OF ANY INFORMATION USED IN CONNECTION WITH THE COMPUTATION OF THE INDEX WHICH IS SUPPLIED BY ANY OTHER PERSON; OR (iv) FOR ANY ECONOMIC OR OTHER LOSS WHICH MAY BE DIRECTLY OR INDIRECTLY SUSTAINED BY ANY BROKER OR HOLDER OF THE PRODUCT OR ANY OTHER PERSON DEALING WITH THE PRODUCT AS A RESULT OF ANY OF THE AFORESAID, AND NO CLAIMS, ACTIONS OR LEGAL PROCEEDINGS MAY BE BROUGHT AGAINST HANG SENG INDEXES COMPANY LIMITED AND/OR HANG SENG DATA SERVICES LIMITED** in connection with the Product in any manner whatsoever by any broker, holder or other person dealing with the Product. Any broker, holder or other person dealing with the Product does so therefore in full knowledge of this disclaimer and can place no reliance whatsoever on Hang Seng Indexes Company Limited and Hang Seng Data Services Limited. For the avoidance of doubt, this disclaimer does not create any contractual or quasi-contractual relationship between any broker, holder or other person and Hang Seng Indexes Company Limited and/or Hang Seng Data Services Limited and must not be construed to have created such relationship.

利安-华侨证券 中国龙头企业ETF

与80家*中国龙头企业一起掌握机遇。

季度快讯

2023年第四季度



©利安资产管理公司。公司注册号码：198601745D。新加坡华侨银行集团旗下成员。

www.lionglobalinvestors.com

*基于恒生沪深港通中国80指数的相关指数证券

简介

- 利安-华侨证券中国龙头企业ETF于2021年8月2日在新加坡证券市场挂牌上市。
- 该ETF是一个多元化的投资组合，包含多个行业的行业龙头企业。
- 该ETF属于被动型基金，完全复制恒生沪深港通中国80指数。

关键事实

- 交易货币：新元和人民币
- 资产管理总规模：截至2023年12月31日，7,400万新元
- 管理费：每年0.45%
- 新交所代号：YYY（新元），YYR（人民币）

主要特征



80家在港交所、深交所和上交所上市的最大的中国公司¹



在调仓期间，个股和行业的权重上限分别为8%和40%²



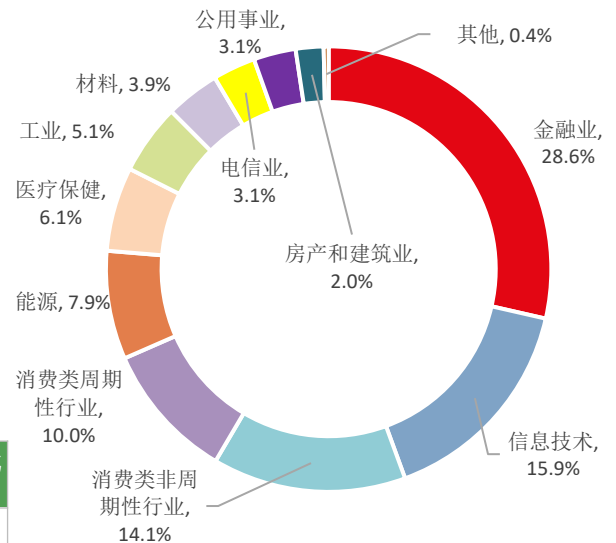
每季度（每年3月、6月、9月和12月）进行一次调仓

利安-华侨证券中国龙头企业ETF业绩³



彭博截至2023年9月30日	2023年收益率	基金成立以来的年化收益率 (%) *
利安-华侨证券中国龙头企业ETF	-12.8%	-13.6%
基准指数	-13.0%	-13.5%

行业分布



数据来源：利安资产管理公司，2023年12月31日

* 收益基于新元资产净值，并假设所有股息扣除再投资时应付的所有费用后，均已用于再投资。业绩按新元计算。利安-华侨证券中国龙头企业ETF于2021年8月2日上市。相关意见和估计构成我们的判断。这些意见和估计以及其他投资组合数据可能发生变化，恕不另行通知。过往业绩以及任何预测、推测或预报并不一定代表未来或可能的业绩。

¹ 基于恒生沪深港通中国80指数的相关指数证券。

² 指数提供商（恒生指数有限公司）将每半年对指数内的个股权重进行一次复核，每季度对指数内的个股权重进行一次调整。由于调仓前后发生的市场波动，各指数证券和行业的权重可能发生8%至40%的波动

³ 数据来源：彭博、利安资产管理公司、恒生指数公司，截至2023年12月31日

中国 - 2023年第四季度回顾

在过去几个月里，我们看到中国的领袖们不断宣布出一系列支持经济增长的措施。其中包括增发人民币1万亿元的国债用于基础设施投资。这一举措将使中国财政赤字占GDP的比例从之前的3%提高到3.8%。预算赤字的修改令市场感到意外，因为这种修改在过去是很少见的。这也表明，领袖们更加深刻地认识到支持经济已迫在眉睫。还有媒体报道称，中国计划为城中村改造和保障性住房计划提供人民币1万亿元的低成本融资。

中美关系出现改善迹象，王毅外长和安东尼-布林肯国务卿举行了会晤，随后习近平主席和拜登总统在2023年11月的亚太经合组织峰会上也举行了会晤。2024年，中国可能会进一步为经济提供财政支持，因为领袖们似乎愿意容忍更高的预算赤字。经济数据，特别是工业活动方面的数据的改善也令我们感到鼓舞。

我们预计相关政策将更加注重实现产业升级，这将推动2024年的订单复苏。我们认为，宏观经济数据企稳，以及中美紧张关系缓和，都是推动中国股市朝着利好方向迈出的正确一步。

图1：估值和一致盈利预测

市场	12个月远期市盈率			盈利增长率 (%)	
	当前	10年平均	溢价	2023财年	2024财年
美国	19.8	17.8	11%	1.5	10.8
欧洲	12.8	14.4	-11%	-0.8	6.0
新加坡	10.2	12.7	-20%	17.5	2.7
中国	8.7	11.4	-24%	13.8	14.9
亚太地区（日本除外）	12.7	13.2	-4%	-1.6	17.4
日本	13.4	13.9	-4%	2.9	14.0

数据来源：汤森路透，截至2024年1月。

备注：F-一致预测，ex-不包括，P/E-市盈率

除非另有说明，所有数据均来自利安资产管理和彭博社，截至2023年12月31日。

我们预计政策将更加注重产业升级，这将支持2024年的订单复苏。利安-华侨证券中国龙头企业ETF为80家行业龙头企业提供融资机会，完全有能力在中国的长期增长历程中乘风破浪。

自成立以来，基准指数和ETF与其他专注于中国的指数和ETF相比如何？

尽管2023年第四季度中国市场整体呈震荡走势，但相对于其他专注于中国的指数，恒生沪深港通中国80指数（基准指数）的业绩较稳定。在2021年8月2日（ETF上市日期）至2023年12月31日期间，该指数截至2023年12月31日的累计业绩跑赢了⁴其他专注于中国的指数（图2），如MSCI中国指数和沪深300指数。

在2021年8月2日至2023年12月31日期间，利安-华侨证券中国龙头企业ETF截至2023年12月31日的累计业绩也跑赢了⁵在新交所上市的其他专注于中国的ETF（图3），如XtrackersMSCI中国UCITS ETF和大华上证50中国ETF。取得上述优异的（截至2023年12月31日）累计业绩的原因是该指数剔除了美国存托凭证（ADR）。

因此，美国存托凭证的剔除预计将使该指数的外国监管风险敞口缩小，而这可能会对在美国上市的中国公司产生不利影响。通过向仅在联交所、上交所和深交所⁶上市的行业龙头企业提供多样化的融资机会，利安-华侨证券中国龙头企业ETF不太容易受到外国监管风险的影响，并且能够更好地缓冲更广泛的市场波动。

图2：相对于其他专注于中国的指数的基准指数业绩

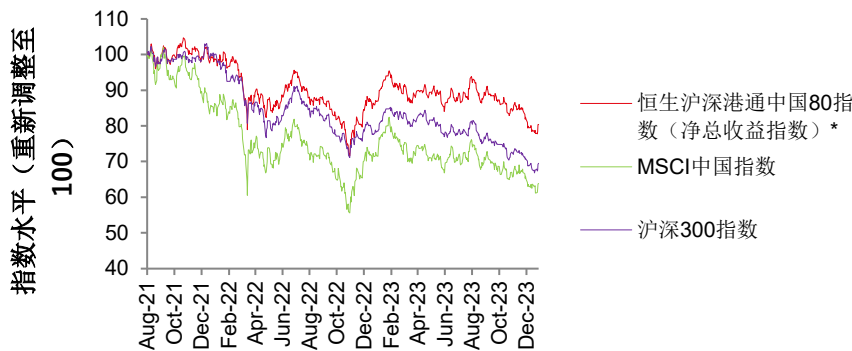
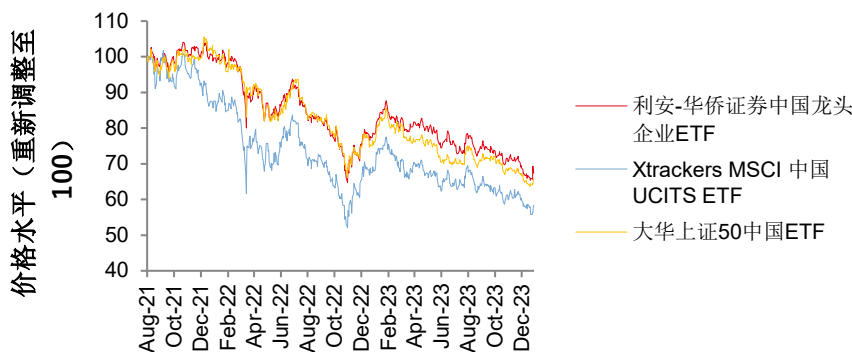


图3：本ETF相对于其他专注于中国的ETF的业绩*



相同点

上述ETF为中国股票市场提供广泛的投资机会。

不同点

利安-华侨证券中国龙头企业ETF不包括美国存托凭证

彭博截至2023年12月31日	2023年收益率	基金成立以来的年化收益率 (%) *
利安-华侨证券中国龙头企业ETF	-12.8%	-13.6%
Xtrackers MSCI中国UCITS ETF	-16.4%	-20.1%
大华上证50中国ETF	-15.5%	-16.2%

备注：目前，每只ETF都采用直接复制策略跟踪各自的指数。Xtrackers MSCI中国 UCITS ETF跟踪MSCI中国指数，而大华上证50中国ETF跟踪上证50指数。

* 收益基于新元资产净值，并假设所有股息扣除再投资时应付的所有费用后，均已用于再投资。利安-华侨证券中国龙头企业ETF于2021年8月2日上市

过往业绩以及任何预测、推测或预报并不一定代表未来或可能的业绩。相关意见和估计构成我们的判断。这些意见和估计以及其他投资组合数据可能发生变化，恕不另行通知。

^{4、5}数据来源：彭博，2023年12月

⁶联交所、上交所及深交所分别指香港联合交易所、上海证券交易所和深圳证券交易所。

免责声明

利安资金管理公司

本广告或出版物未经新加坡金融管理局审核，本广告或出版物仅供参考，且并非关于买卖任何资本市场产品或投资的建议、要约或邀请，亦不考虑您的具体投资目标、财务状况、税务状况或需要。

在决定是否购买利安-华侨证券中国龙头企业ETF ("ETF") 的单位之前，您应当阅读可从利安资金管理公司 (LGI) 或其任何分销商和指定参与券商 ("PD") 处获得的该ETF招募说明书和产品亮点表，以了解包括风险因素在内的更多详情，并考虑该ETF是否适合您，如有需要，您可向金融顾问寻求建议。

对ETF的投资并非LGI或其任何关联公司的责任，也不是存放在LGI或其任何关联公司的存款，亦非由LGI或其任何关联公司担保或保险。投资者须承担投资风险，包括可能损失投资本金。我们不就ETF的业绩作出保证，并且其单位的价值和该等单位产生的收益（如有）可能上涨或下跌。过往业绩、分红收益率和分红以及任何预测、推测或预报均不一定代表ETF的未来或可能业绩、分红收益率和分红。任何异常业绩可能是由于特殊情况造成，而这些情况可能不具有持续性。LGI不保证一定会用收益和/或资本进行派息，具体会否如此由LGI酌情决定。任何此类派息将使可用于再投资的资本减少，并可能导致基金资产净值立即下降。提及特定证券的目的仅限于举例，不得被视为买入或卖出证券的建议。不应假定投资于该特定证券将有利可图。我们无法保证在提供此信息时，ETF仍将保留所呈列的任何配置或持有的证券。任何信息，包括意见、估计、图片、图表、公式或设备，均可随时予以更改或更正，恕不另行通知，请勿将其作为建议使用。建议您自行对任何信息或本文件中所含任何信息的相关性、准确性、充分性及可靠性进行独立评估及调查，并就此寻求专业意见。对于该等信息，我们不作任何保证，也不就因您根据该等信息采取行动而直接或间接产生的任何损失承担任何责任。如果招募说明书允许，ETF可以投资金融衍生工具，以进行对冲或有效的投资组合管理。与投资于全球市场或更广泛的区域市场的基金相比，ETF的资产净值可能具有更大的波动性，因为其投资范围较窄，且重点集中在有限的地域市场。LGI、其关联公司及各自的董事和/或雇员可持有ETF的单位，并为其自身或客户买卖ETF的单位。

ETF的单位在新加坡交易所证券交易有限公司 ("SGX-ST") 挂牌交易，并可能按照不同于其资产净值的价格进行交易、暂停交易或摘牌。这种挂牌并不保证该等单位有流动市场。您不能直接向ETF的管理人购买或赎回ETF的单位，但在特定情况下，您可以在SGX-ST或通过PD购买或赎回ETF的单位。

© Lion Global Investors Limited (利安资金管理公司) (唯一实体编号/注册编号：198601745D)。保留所有权利。利安资金管理公司是一家在新加坡注册成立的公司，与住所在欧洲或美国的任何公司或贸易实体（其控股公司拥有的实体除外）无关。

免责声明

恒生指数有限公司及恒生资讯服务有限公司

恒生沪深港通中国80指数（“**指数**”）由恒生指数有限公司依据恒生资讯服务有限公司的许可发布和编制。“恒生沪深港通中国80指数”的标记和名称是恒生资讯服务有限公司的**专有财产**。恒生指数有限公司和恒生资讯服务有限公司已同意使用和参考利安资金管理公司发布的与利安-华侨证券中国龙头企业ETF（“**产品**”）有关的**指数**，但恒生指数有限公司和恒生资讯服务有限公司均不向产品的任何**经纪人**或**持有人**或任何其他人士就以下事项作出**保证或陈述**：(i) **指数及其计算或与之相关的任何信息的准确性或完整性**；或(ii) **将指数或其包含的任何内容或数据用于任何目的的适合性或适当性**；或(iii) **任何人士因出于任何目的使用指数或其包含的任何内容或数据而可能获得的结果**。同时，恒生指数有限公司和恒生资讯服务有限公司也不就**指数**作出或暗示任何种类的**保证或陈述或担保**。恒生指数有限公司可随时变更或更改指数的计算和编制过程和依据以及任何相关公式、成份股及因素，恕不另行通知。在适用的法律允许的范围内，恒生指数有限公司和恒生资讯服务有限公司不承担与下列事项相关的任何**责任**：(i) **使用和/或参考利安资金管理公司发布的与产品有关的指数**；或(ii) **恒生指数有限公司在计算指数时出现的任何不准确、遗漏或错误**；或(iii) **在计算任何其他人士提供的指数时出现的任何不准确、遗漏或错误，或计算该等指数时使用的任何信息的不完整**；或(iv) **任何经纪人或产品持有人或用产品进行交易的任何其他人士因上述任何原因而遭受的任何直接或间接经济损失或其他损失**。任何**经纪人或产品持有人或与产品相关的任何索赔、诉讼或法律程序**。--**用产品进行交易的其他人士也不得针对恒生指数有限公司和/或恒生资讯服务有限公司以任何方式提起与产品相关的任何索赔、诉讼或法律程序**。任何**经纪人、产品持有人或用产品进行交易的其他人士充分知晓本免责声明**，而且不依赖恒生指数有限公司和恒生资讯服务有限公司向其提供任何信息。为免生疑问，本免责声明并不在任何**经纪人、产品持有人或其他人士与恒生指数有限公司和/或恒生资讯服务有限公司之间**创建任何合同或准合同关系，亦不得**视作已创建该等关系**。